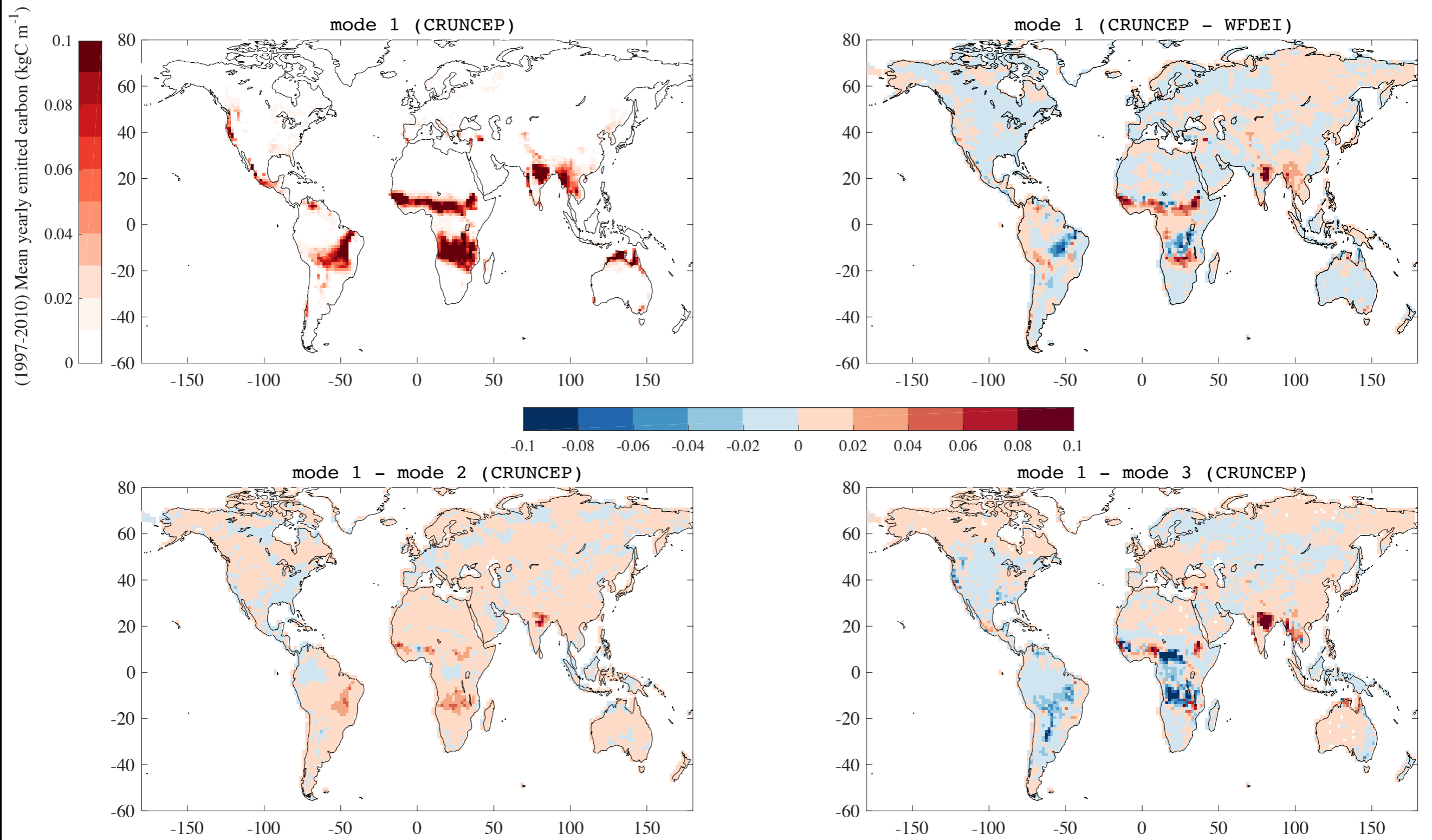


The influence of ignitions



Where to now?



For science

Assessing the reliability of INFERNO from an atmospheric perspective (focus on air composition)

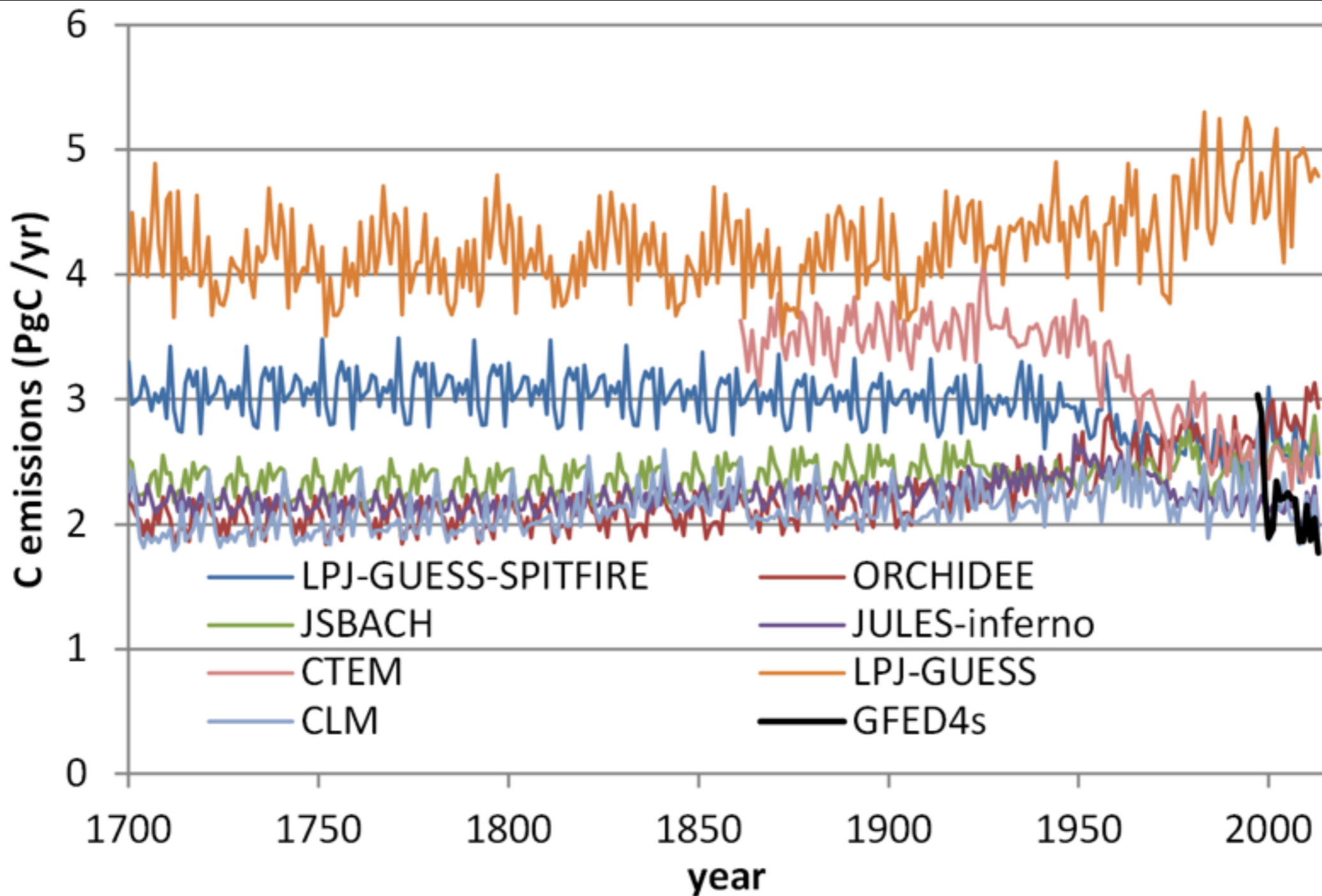
Exploring how fires interact with the Earth System:

- **How fires affect air composition and air quality,**
- How they influence vegetation (destroying forests, favouring savanna),
- **How they influence climate (radiative forcing).**

For applications

INFERNO (and other such fire models, ideally as an ensemble of models) can also be used when trying to quantitatively answer policy questions (providing a type of **climate service**):

- Will boreal forests be more vulnerable to fires in the upcoming century?
- Are fires in rainforests a man-made phenomenon?
- How will population changes affect fire regimes?



FireMIP

Comparing global fire models (1700-2012)



YOUNG
EARTH SYSTEM
SCIENTISTS
community

Young Earth System Scientists

an interdisciplinary community
of early career researchers
a c r o s s t h e g l o b e

- ✓ YESS welcomes members from a range of scientific backgrounds, creating a synergy between researchers in natural and social sciences who represent the future of earth system science.
- ✓ YESS serves as a powerful partner with prominent international organizations to give young scientists a collective voice.
- ✓ YESS sets an example for the scientific community through an incorporated online network, reducing our carbon footprint and enabling interaction across diverse regions and cultures.

Find us on

<https://twitter.com/yesscommunity>
<https://www.facebook.com/yesscommunity0/>



YOUNG
EARTH SYSTEM
SCIENTISTS
community

As young scientists, we have a critical role in shaping the future of Earth system science. We lead new endeavors in the frontiers of science, seamlessly integrating international research across multiple disciplines. Within YESS we seek to pioneer crucial areas of research which provide solutions to benefit society.



The YESS community is focused on early career researchers (PhD candidates, Postdocs within 5 years after PhD, or Masters students) in the Earth system sciences. YESS consists of the YESS members, the Council, Working Groups, Regional Representatives, and the Executive Committee.

Join us!

Email: contact@yess-community.org
Website: www.yess-community.org

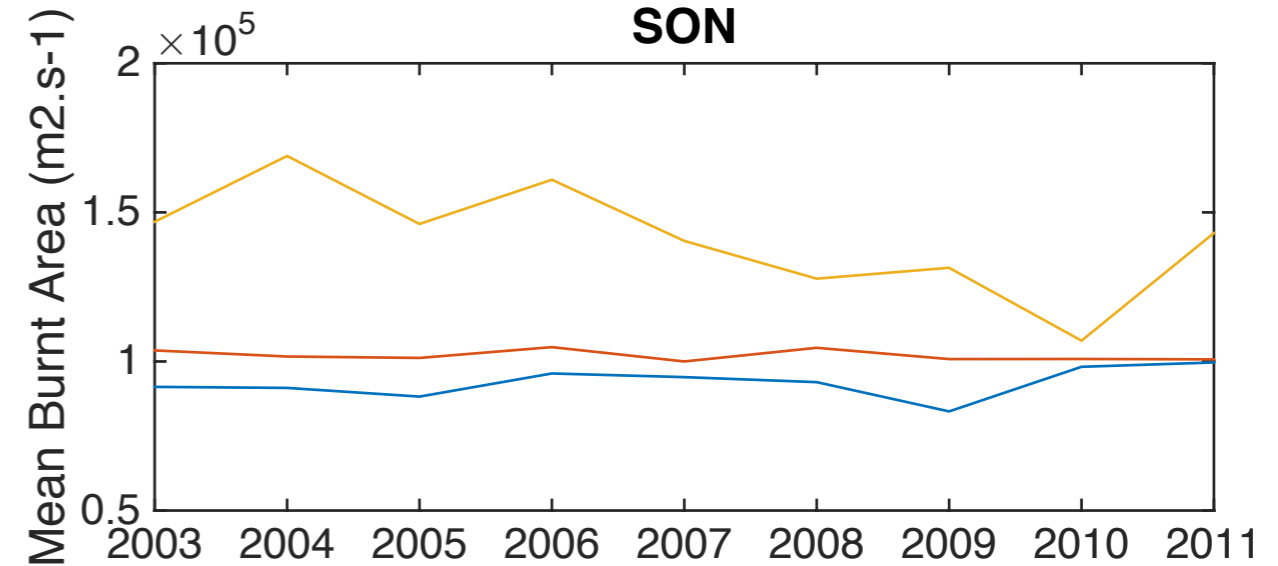
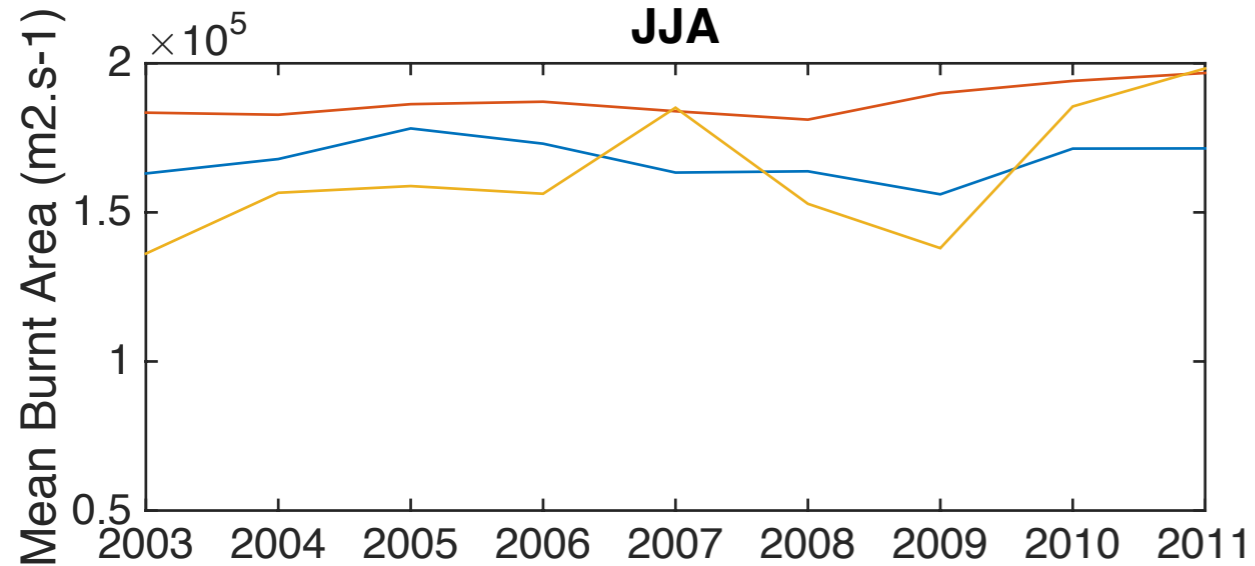
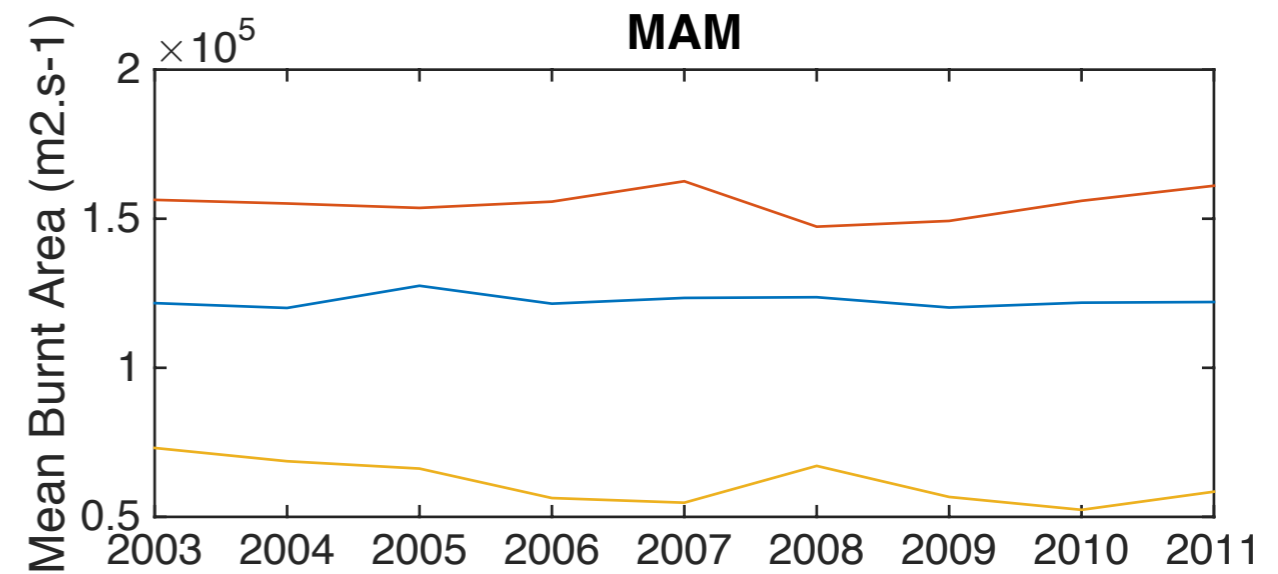
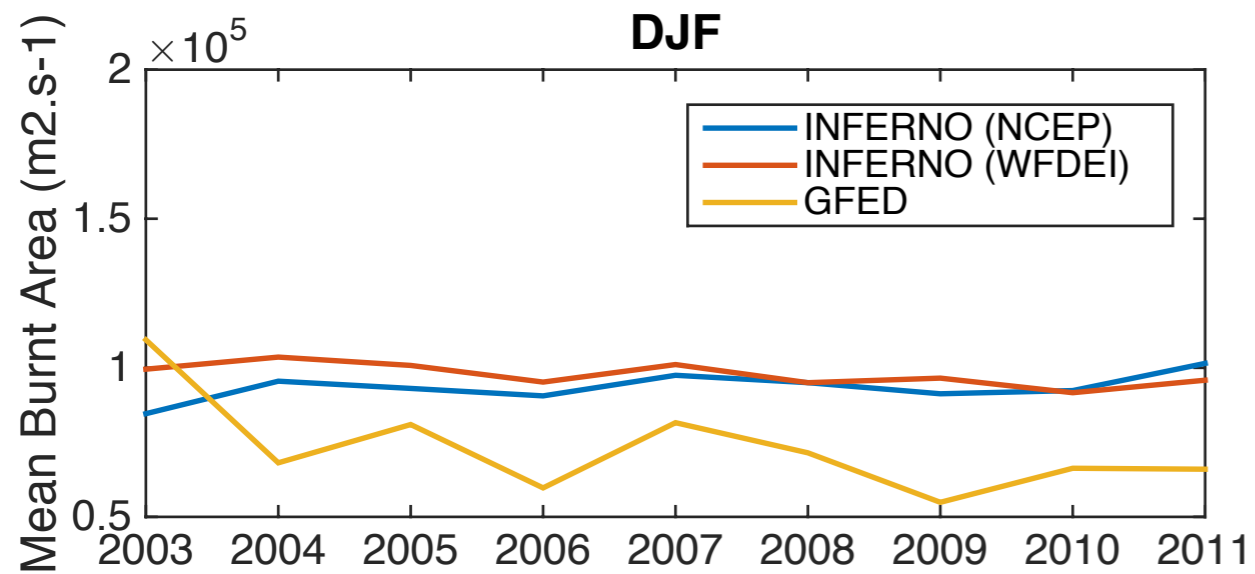


Questions?

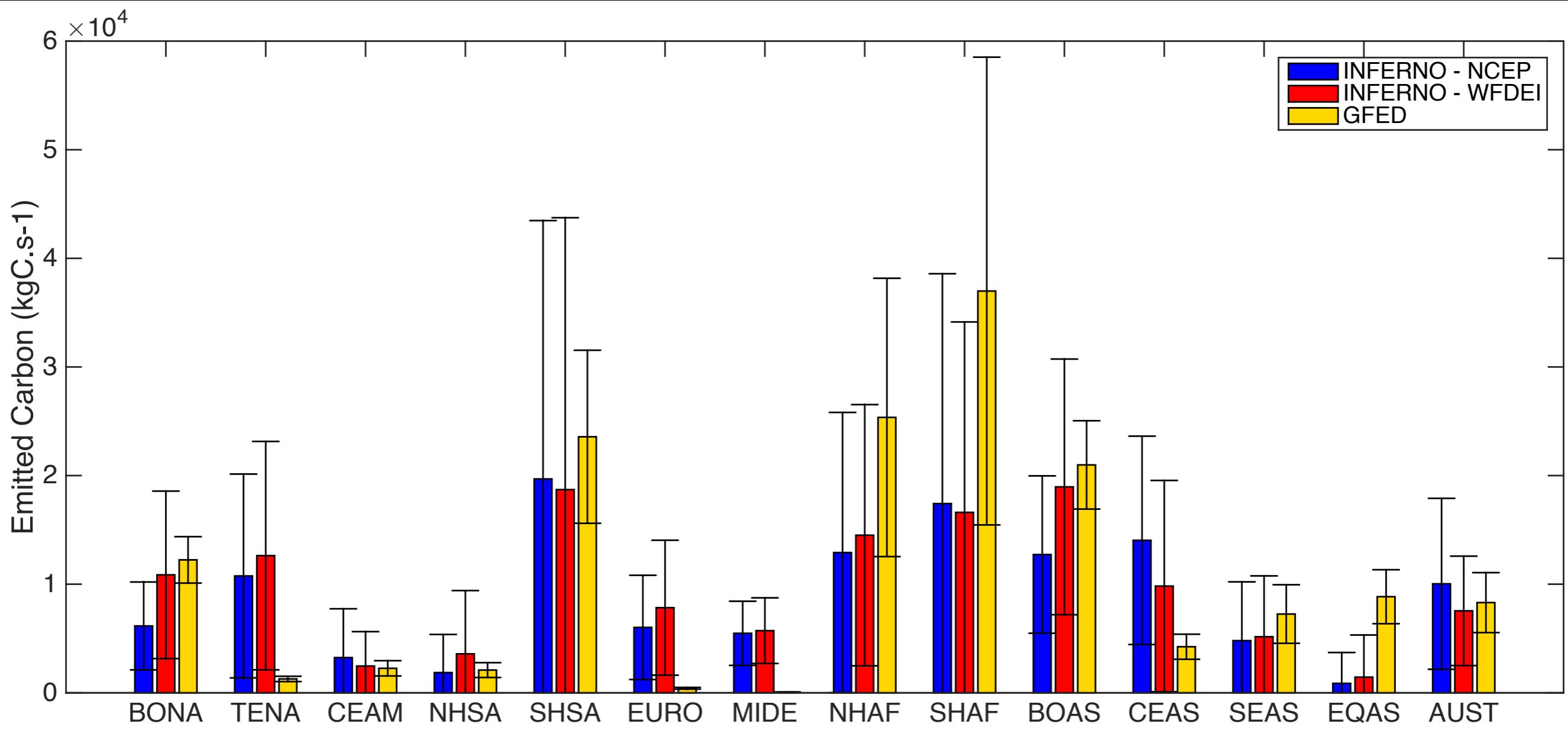


stephane.mangeon12@imperial.ac.uk

Extra plots - seasonality



Extra plots - Regional budgets



Extra plots - PFT-specs

