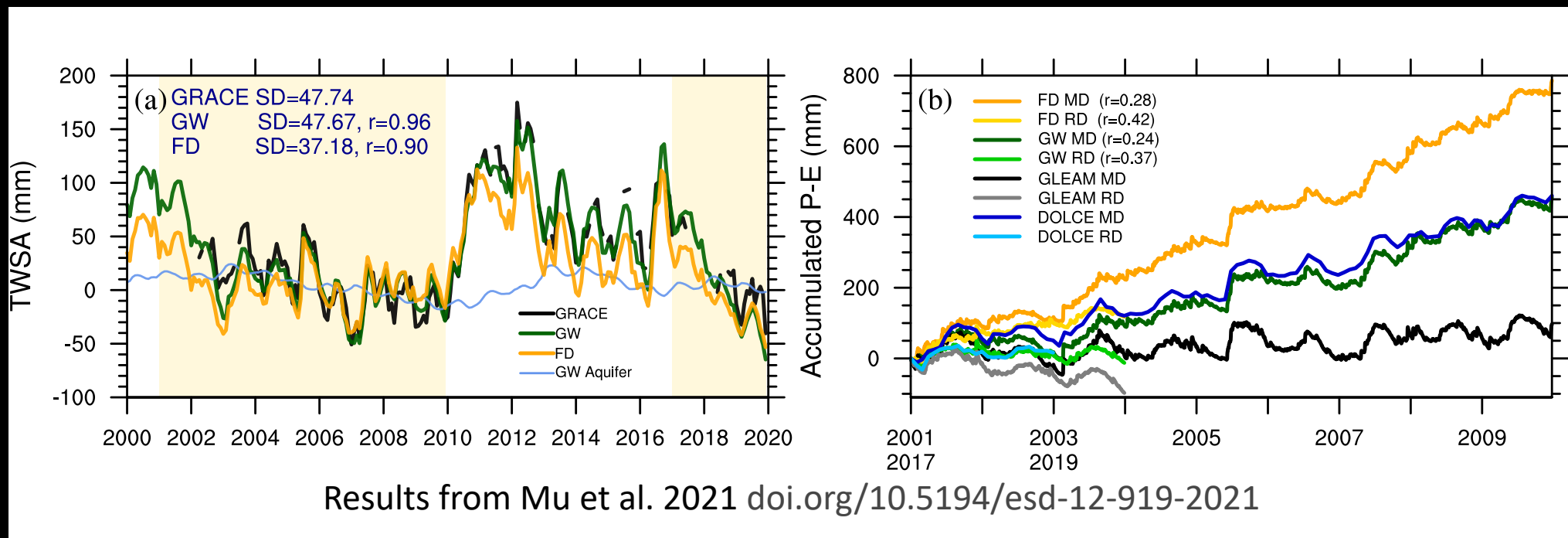


CABLE update

Science update

- Implementation of the CABLE albedo code in JULES, in `surf_couple_radiation_mod` with appropriate rose-stem test.
- Groundwater representation is about to be available in CABLE. Still need some testing. Mu et al. 2021 (doi.org/10.5194/hess-25-447-2021)



CABLE update

Technical update

- Migration to git and GitHub for CABLE is coming soon, early 2024 at the latest.
- Documentation work is underway. Science documentation is using FORD, within the CABLE code.
- Work on the CABLE implementation in JULES is slowing down, due to increase focus on CMIP7 preparations